

Non-Azo Macarons



12 Mango

15-17 g / 0.53-0.60 oz /pc.
H: 27 mm, 1.06 in
Ø: 40 mm, 1.57 in

12 Coconut

15-17 g / 0.53-0.60 oz /pc.
H: 27 mm, 1.06 in
Ø: 40 mm, 1.57 in

12 Pistachio

15-17 g / 0.53-0.60 oz /pc.
H: 27 mm, 1.06 in
Ø: 40 mm, 1.57 in

12 Milk Chocolate

15-17 g / 0.53-0.60 oz /pc.
H: 27 mm, 1.06 in
Ø: 40 mm, 1.57 in



12 Speculoos

15-17 g / 0.53-0.60 oz /pc.
H: 27 mm, 1.06 in
Ø: 40 mm, 1.57 in

12 Cherry

15-17 g / 0.53-0.60 oz /pc.
H: 27 mm, 1.06 in
Ø: 40 mm, 1.57 in

12 Hazelnut

15-17 g / 0.53-0.60 oz /pc.
H: 27 mm, 1.06 in
Ø: 40 mm, 1.57 in

12 Banana

15-17 g / 0.53-0.60 oz /pc.
H: 27 mm, 1.06 in
Ø: 40 mm, 1.57 in

96 Assorted Non-Azo Macarons

48 pcs. / tray, 2 trays / box
Item: 8967021



Petit Cheesecake



16 New York

17-18 g / 0.60-0.63 oz /pc.
H: 20 mm, 0.79 in
Ø: 35 mm, 1.38 in



16 Marble

17-18 g / 0.60-0.63 oz /pc.
H: 20 mm, 0.79 in
Ø: 35 mm, 1.38 in



16 Caramel

17-18 g / 0.60-0.63 oz /pc.
H: 20 mm, 0.79 in
Ø: 35 mm, 1.38 in



16 Blueberry

17-18 g / 0.60-0.63 oz /pc.
H: 20 mm, 0.79 in
Ø: 35 mm, 1.38 in



16 Chocolate

17-18 g / 0.60-0.63 oz /pc.
H: 20 mm, 0.79 in
Ø: 35 mm, 1.38 in



16 Raspberry

17-18 g / 0.60-0.63 oz /pc.
H: 20 mm, 0.79 in
Ø: 35 mm, 1.38 in



96 Assorted Petit Cheesecake

48 pcs. / tray, 2 trays / box
Item: 8951600



Chocolat et Fruit



28 Chocolate Lemon

11-12 g / 0.39-0.42 oz /pc.
H: 10 mm, 0.39 in
Ø: 35 mm, 1.38 in

28 Chocolate Passion Fruit

11-12 g / 0.39-0.42 oz /pc.
H: 10 mm, 0.39 in
Ø: 35 mm, 1.38 in

28 Chocolate Mango

11-12 g / 0.39-0.42 oz /pc.
H: 10 mm, 0.39 in
Ø: 35 mm, 1.38 in



28 Chocolate Cherry

11-12 g / 0.39-0.42 oz /pc.
H: 10 mm, 0.39 in
Ø: 35 mm, 1.38 in

28 Chocolate Raspberry

11-12 g / 0.39-0.42 oz /pc.
H: 10 mm, 0.39 in
Ø: 35 mm, 1.38 in

28 Chocolate Blackcurrant

11-12 g / 0.39-0.42 oz /pc.
H: 10 mm, 0.39 in
Ø: 35 mm, 1.38 in

168 Assorted Chocolat et Fruit

42 pcs. / tray, 4 trays / box
Item: 8967014



Chocolat et Crème



20 Chocolate Hazelnut

11-12 g / 0.39-0.42 oz /pc.
 H: 10 mm, 0.39 in
 L: 62 mm, 2.44 in
 W: 24 mm, 0.94 in



20 Chocolate Pistachio

11-12 g / 0.39-0.42 oz /pc.
 H: 10 mm, 0.39 in
 L: 62 mm, 2.44 in
 W: 24 mm, 0.94 in



20 Milk Chocolate

11-12 g / 0.39-0.42 oz /pc.
 H: 10 mm, 0.39 in
 L: 62 mm, 2.44 in
 W: 24 mm, 0.94 in



20 Chocolate Cinnamon

11-12 g / 0.39-0.42 oz /pc.
 H: 10 mm, 0.39 in
 L: 62 mm, 2.44 in
 W: 24 mm, 0.94 in



20 Chocolate Caramel

11-12 g / 0.39-0.42 oz /pc.
 H: 10 mm, 0.39 in
 L: 62 mm, 2.44 in
 W: 24 mm, 0.94 in

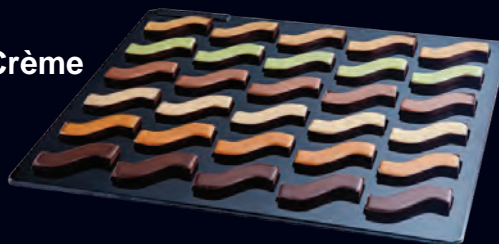


20 Dark Chocolate

11-12 g / 0.39-0.42 oz /pc.
 H: 10 mm, 0.39 in
 L: 62 mm, 2.44 in
 W: 24 mm, 0.94 in

120 Assorted Chocolat et Crème

30 pcs. / tray, 4 trays /box
 Item: 8967017



Large Tartes Passion



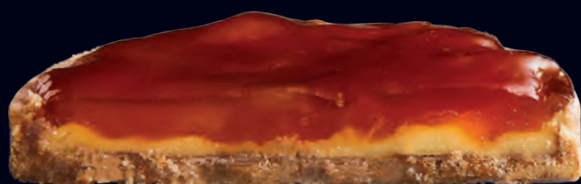
27 Lemon

65-70 g / 2.29-2.47 oz /pc.
H: 13 mm, 0.51 in
Ø: 79 mm, 3.11 in
9 pcs. / tray, 3 trays / box
Item: 8967020



27 Caramel Almond

63-68 g / 2.22-2.40 oz /pc.
H: 18 mm, 0.71 in
Ø: 79 mm, 3.11 in
9 pcs. / tray, 3 trays / box
Item: 8967018



27 Pear Chocolate

65-70 g / 2.29-2.47 oz /pc.
H: 16 mm, 0.63 in
Ø: 79 mm, 3.11 in
9 pcs. / tray, 3 trays / box
Item: 8967022



27 Apple Confit

75-80 g / 2.65-2.82 oz /pc.
H: 18 mm, 0.71 in
Ø: 79 mm, 3.11 in
9 pcs. / tray, 3 trays / box
Item: 8967019



Les Tartes Passion



12 Chocolate Praline

12-14 g / 0.42-0.49 oz /pc.
H: 20 mm, 0.79 in
Ø: 37 mm, 1.46 in



12 Caramel Almond

12-13 g / 0.42-0.46 oz /pc.
H: 16 mm, 0.63 in
Ø: 37 mm, 1.46 in



12 Apricot Almond

13-15 g / 0.46-0.53 oz /pc.
H: 22 mm, 0.87 in
Ø: 37 mm, 1.46 in



12 Lemon

12-14 g / 0.42-0.49 oz /pc.
H: 12 mm, 0.47 in
Ø: 37 mm, 1.46 in



12 Apple Vanilla

17-19 g / 0.60-0.67 oz /pc.
H: 22 mm, 0.87 in
Ø: 37 mm, 1.46 in



12 Pear Chocolate

10-12 g / 0.35-0.42 oz /pc.
H: 16 mm, 0.63 in
Ø: 37 mm, 1.46 in



72 Assorted Les Tartes Passion

36 pcs. / tray, 2 trays / box
Item: 8095131

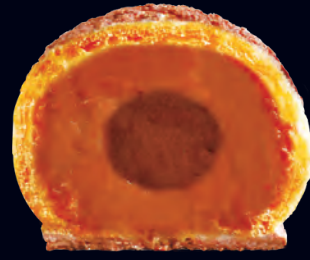


Les Chouchous



14 Blackcurrant & Vanilla

17-18 g / 0.60-0.63 oz /pc.
H: 30 mm, 1.18 in
Ø: 40 mm, 1.57 in



14 Double Chocolate

17-18 g / 0.60-0.63 oz /pc.
H: 30 mm, 1.18 in
Ø: 40 mm, 1.57 in



14 Double Raspberry

17-18 g / 0.60-0.63 oz /pc.
H: 30 mm, 1.18 in
Ø: 40 mm, 1.57 in



14 Nutty Caramel & Vanilla

17-18 g / 0.60-0.63 oz /pc.
H: 30 mm, 1.18 in
Ø: 40 mm, 1.57 in



14 Mango & Passion Fruit

17-18 g / 0.60-0.63 oz /pc.
H: 30 mm, 1.18 in
Ø: 40 mm, 1.57 in



14 Pistachio & Chocolate

17-18 g / 0.60-0.63 oz /pc.
H: 30 mm, 1.18 in
Ø: 40 mm, 1.57 in



84 Assorted Les Chouchous

42 pcs. / tray, 2 trays / box
Item: 8095076



Les Carolines



12 Pistachio

13-15 g / 0.46-0.53 oz /pc.
H: 25 mm, 0.98 in
L: 60 mm, 2.36 in



12 Chocolate

13-15 g / 0.46-0.53 oz /pc.
H: 25 mm, 0.98 in
L: 60 mm, 2.36 in



12 Vanilla

13-15 g / 0.46-0.53 oz /pc.
H: 25 mm, 0.98 in
L: 60 mm, 2.36 in



12 Raspberry

13-15 g / 0.46-0.53 oz /pc.
H: 25 mm, 0.98 in
L: 60 mm, 2.36 in



12 Salted Caramel

13-15 g / 0.46-0.53 oz /pc.
H: 25 mm, 0.98 in
L: 60 mm, 2.36 in



12 Lemon

13-15 g / 0.46-0.53 oz /pc.
H: 25 mm, 0.98 in
L: 60 mm, 2.36 in

72 Assorted Les Carolines

24 pcs. / tray, 3 trays / box
Item: 8095132



Macarons



12 Lemon

15-17 g / 0.53-0.60 oz /pc.
H: 27 mm, 1.06 in
Ø: 40 mm, 1.57 in

12 Coffee

15-17 g / 0.53-0.60 oz /pc.
H: 27 mm, 1.06 in
Ø: 40 mm, 1.57 in

12 Vanilla

15-17 g / 0.53-0.60 oz /pc.
H: 27 mm, 1.06 in
Ø: 40 mm, 1.57 in

12 Chocolate

15-17 g / 0.53-0.60 oz /pc.
H: 27 mm, 1.06 in
Ø: 40 mm, 1.57 in



12 Raspberry

15-17 g / 0.53-0.60 oz /pc.
H: 27 mm, 1.06 in
Ø: 40 mm, 1.57 in

12 Salted Caramel

15-17 g / 0.53-0.60 oz /pc.
H: 27 mm, 1.06 in
Ø: 40 mm, 1.57 in

12 Earl Grey

15-17 g / 0.53-0.60 oz /pc.
H: 27 mm, 1.06 in
Ø: 40 mm, 1.57 in

12 Passion Fruit

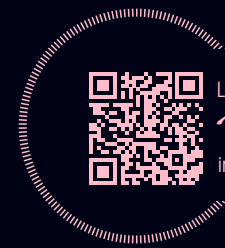
15-17 g / 0.53-0.60 oz /pc.
H: 27 mm, 1.06 in
Ø: 40 mm, 1.57 in

96 Assorted Macarons

48 pcs. / tray, 2 trays / box
Item: 8094056



Mini Macarons



Learn more about our
Macarons
in this video.



14 Mini Vanilla

6-7 g / 0.21-0.25 oz /pc.
H: 22 mm, 0.87 in
Ø: 28 mm, 1.10 in

14 Mini Orange

6-7 g / 0.21-0.25 oz /pc.
H: 22 mm, 0.87 in
Ø: 28 mm, 1.10 in

14 Mini Chocolate

6-7 g / 0.21-0.25 oz /pc.
H: 22 mm, 0.87 in
Ø: 28 mm, 1.10 in



14 Mini Passion Fruit

6-7 g / 0.21-0.25 oz /pc.
H: 22 mm, 0.87 in
Ø: 28 mm, 1.10 in

14 Mini Raspberry

6-7 g / 0.21-0.25 oz /pc.
H: 22 mm, 0.87 in
Ø: 28 mm, 1.10 in

14 Mini Salted Caramel

6-7 g / 0.21-0.25 oz /pc.
H: 22 mm, 0.87 in
Ø: 28 mm, 1.10 in



14 Mini Earl Grey

6-7 g / 0.21-0.25 oz /pc.
H: 22 mm, 0.87 in
Ø: 28 mm, 1.10 in

14 Mini Coffee

6-7 g / 0.21-0.25 oz /pc.
H: 22 mm, 0.87 in
Ø: 28 mm, 1.10 in

14 Mini Lemon

6-7 g / 0.21-0.25 oz /pc.
H: 22 mm, 0.87 in
Ø: 28 mm, 1.10 in

126 Assorted Mini Macarons

63 pcs. / tray, 2 trays / box
Item: 8094080



Double-Flavored Macarons



12 Hazelnut & Caramel

15-17 g / 0.53-0.60 oz /pc.
H: 27 mm, 1.06 in
Ø: 40 mm, 1.57 in



12 Mango & Coconut

15-17 g / 0.53-0.60 oz /pc.
H: 27 mm, 1.06 in
Ø: 40 mm, 1.57 in



12 Cinnamon & Green Apple

15-17 g / 0.53-0.60 oz /pc.
H: 27 mm, 1.06 in
Ø: 40 mm, 1.57 in



12 Chocolate & Banana

15-17 g / 0.53-0.60 oz /pc.
H: 27 mm, 1.06 in
Ø: 40 mm, 1.57 in



12 Vanilla & Cherry

15-17 g / 0.53-0.60 oz /pc.
H: 27 mm, 1.06 in
Ø: 40 mm, 1.57 in



12 Tiramisu & Coffee

15-17 g / 0.53-0.60 oz /pc.
H: 27 mm, 1.06 in
Ø: 40 mm, 1.57 in



12 Lemon & Raspberry

15-17 g / 0.53-0.60 oz /pc.
H: 27 mm, 1.06 in
Ø: 40 mm, 1.57 in



12 Pistachio & Chocolate

15-17 g / 0.53-0.60 oz /pc.
H: 27 mm, 1.06 in
Ø: 40 mm, 1.57 in

96 Assorted Double-Flavored Macarons

48 pcs. / tray, 2 trays / box
Item: 8094110



Mini Double-Flavored Macarons



14 Mini Pistachio & Chocolate

6-7 g / 0.21-0.25 oz /pc.
H: 22 mm, 0.87 in
Ø: 28 mm, 1.10 in

14 Mini Chocolate & Banana

6-7 g / 0.21-0.25 oz /pc.
H: 22 mm, 0.87 in
Ø: 28 mm, 1.10 in

14 Mini Lemon & Raspberry

6-7 g / 0.21-0.25 oz /pc.
H: 22 mm, 0.87 in
Ø: 28 mm, 1.10 in



14 Mini Tiramisu & Coffee

6-7 g / 0.21-0.25 oz /pc.
H: 22 mm, 0.87 in
Ø: 28 mm, 1.10 in

14 Mini Mango & Coconut

6-7 g / 0.21-0.25 oz /pc.
H: 22 mm, 0.87 in
Ø: 28 mm, 1.10 in

14 Mini Hazelnut & Caramel

6-7 g / 0.21-0.25 oz /pc.
H: 22 mm, 0.87 in
Ø: 28 mm, 1.10 in



14 Mini Cinnamon & Green Apple

6-7 g / 0.21-0.25 oz /pc.
H: 22 mm, 0.87 in
Ø: 28 mm, 1.10 in

14 Mini Vanilla & Cherry

6-7 g / 0.21-0.25 oz /pc.
H: 22 mm, 0.87 in
Ø: 28 mm, 1.10 in

14 Mini Orange & Chocolate

6-7 g / 0.21-0.25 oz /pc.
H: 22 mm, 0.87 in
Ø: 28 mm, 1.10 in

126 Assorted Mini Double-Flavored Macarons

63 pcs. / tray, 2 trays / box
Item: 8094201



Les Eclairons



10 Mango & Chocolate

12-14 g / 0.42-0.49 oz. /pc.
H: 25 mm, 0.98 in
L: 50 mm, 1.97 in



10 Blackcurrant & Coconut

12-14 g / 0.42-0.49 oz. /pc.
H: 25 mm, 0.98 in
L: 50 mm, 1.97 in



10 Speculoos & Caramel

12-14 g / 0.42-0.49 oz. /pc.
H: 25 mm, 0.98 in
L: 50 mm, 1.97 in



10 Vanilla & Raspberry

12-14 g / 0.42-0.49 oz. /pc.
H: 25 mm, 0.98 in
L: 50 mm, 1.97 in





Learn more about our
Premium Desserts
in this video.



10 Pistachio & Morello Cherry

12-14 g / 0.42-0.49 oz. /pc.
H: 25 mm, 0.98 in
L: 50 mm, 1.97 in



10 Toffee & Banana

12-14 g / 0.42-0.49 oz. /pc.
H: 25 mm, 0.98 in
L: 50 mm, 1.97 in



10 Raspberry & Chocolate

12-14 g / 0.42-0.49 oz. /pc.
H: 25 mm, 0.98 in
L: 50 mm, 1.97 in



10 Dark Chocolate & Vanilla

12-14 g / 0.42-0.49 oz. /pc.
H: 25 mm, 0.98 in
L: 50 mm, 1.97 in

80 Assorted Les Eclairons

40 pcs. / tray, 2 trays / box
Item: 8095130



